

Colonne di guida con base conica tipo "C"

- Materiale: 16 Cr Ni 4
- Esecuzione: cementate, temprate, rettificate
- Tolleranza: d h5
- Durezza: HRC 60/62

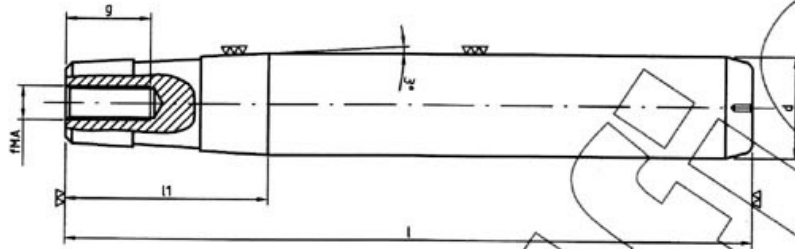
Colonne C
24 x 115
51 x 400

Cod.
ICO
ICO

Mat.
C
C

Mis.
24115
51400

Made in Italy



d	l	l1	g	fMA	
24/25	115	48	20	8	.
	135				.
	155				.
	170				.
	185				.
	200				.
30/31	135	57	20	8	.
	155				.
	170				.
	185				.
	200				.
	225				.
	250				.
300	.				
40/41	170	63	25	10	.
	185				.
	200				.
	225				.
	250				.
	300				.
50/51	400	80	25	10	.
	185				.
	200				.
	225				.
	400				.